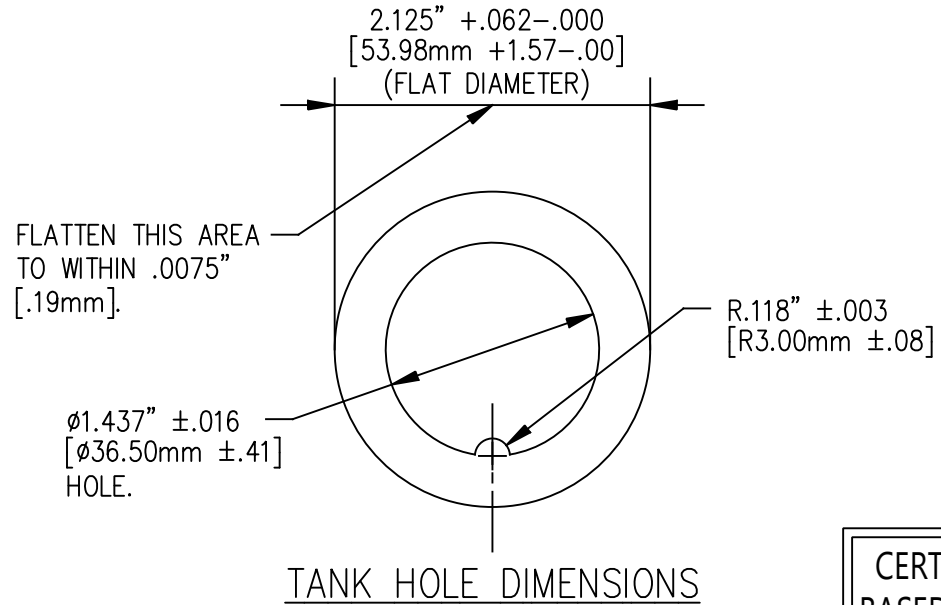
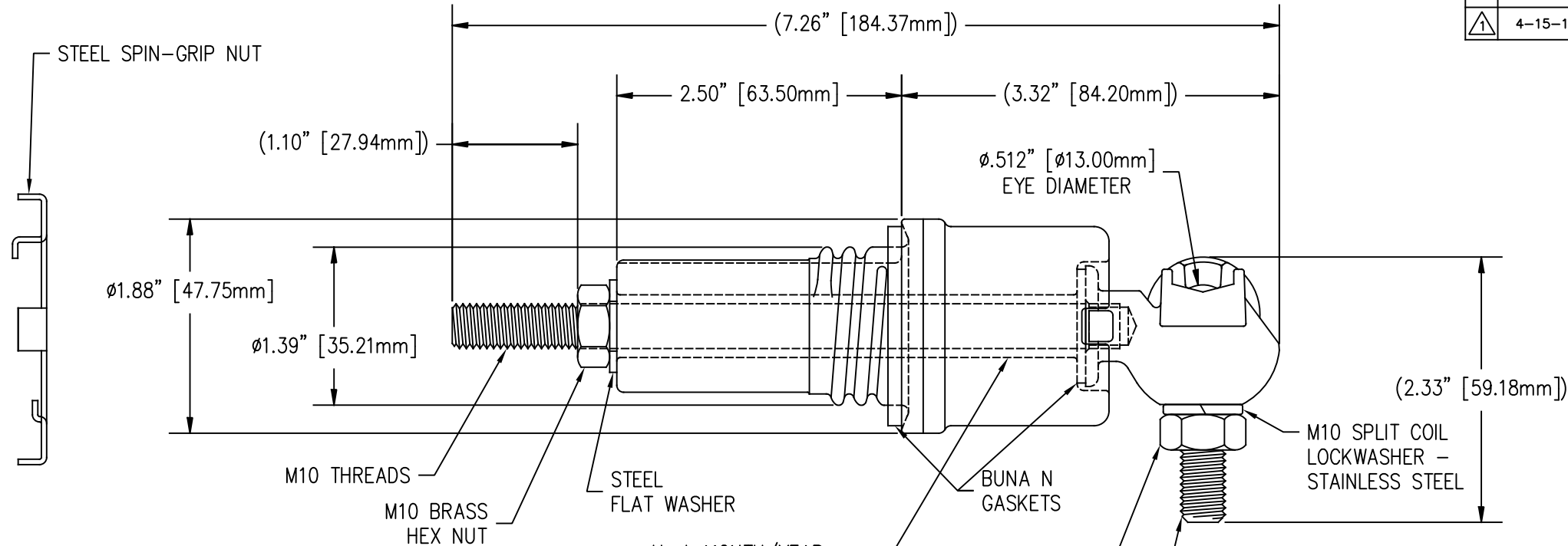


REVISIONS					
NO.	DATE	ECN #	REMARKS	BY	APPD.
1	4-15-17	HJ17-093	CHG'D CERT # WAS NRF-008-CFE-2000 -10- CFE 53100-84	TJF	BLB



MATERIAL:
 STUD - COPPER CDA 11000
 BODY - CDA 84400 - TIN PLATED
 EYEBOLT - CDA 95500 - TIN PLATED

- NOTES:
1. INCLUDES (2) EXTRA BRASS HEX NUTS
 2. INCLUDES (2) EXTRA BRASS WASHERS.
 3. RECOMMENDED INSTALLATION TORQUE LEVEL OF MOUNTING NUT IS 23 ±1 FT-LBS.
- PORCELAIN NOTES:
1. WET PROCESS ELECTRICAL PORCELAIN.
 2. GREY GLAZE MUNSELL 5BG 7.0/0.4
 3. TOLERANCE ±3% WITH NOTHING LESS THAN ±.03.
 4. PORCELAIN IS INSPECTED TO H-J ENTERPRISES INSPECTION GUIDELINES AND STANDARDS DOCUMENT P0161997
 5. MIN CREEP DISTANCE: 1.81" [46.00mm]

CERTIFIED BY CFE/LAPEM (CFE BE2C0450250)
 BASED ON MEXICAN STANDARD CFE 53100-84

TOLERANCES (EXCEPT AS NOTED)
DECIMAL ±.032"/.8mm
FRACTIONAL ±
ANGULAR ±2°



H-J ENTERPRISES, INC.
 3010 HIGH RIDGE BLVD. HIGH RIDGE, MO. 63049 USA
 PHONE 1-636-677-3421 FAX 1-636-376-1915

1.2KV/45KV BIL/250A
 CONTAMINATED AMBIENT

MATERIAL (SEE ABOVE)

CHK'D	APP'D	DRAWING NO.
		MAS0106-006

DRAWN BY CJT DATE 10-16-07 SCALE N.T.S.